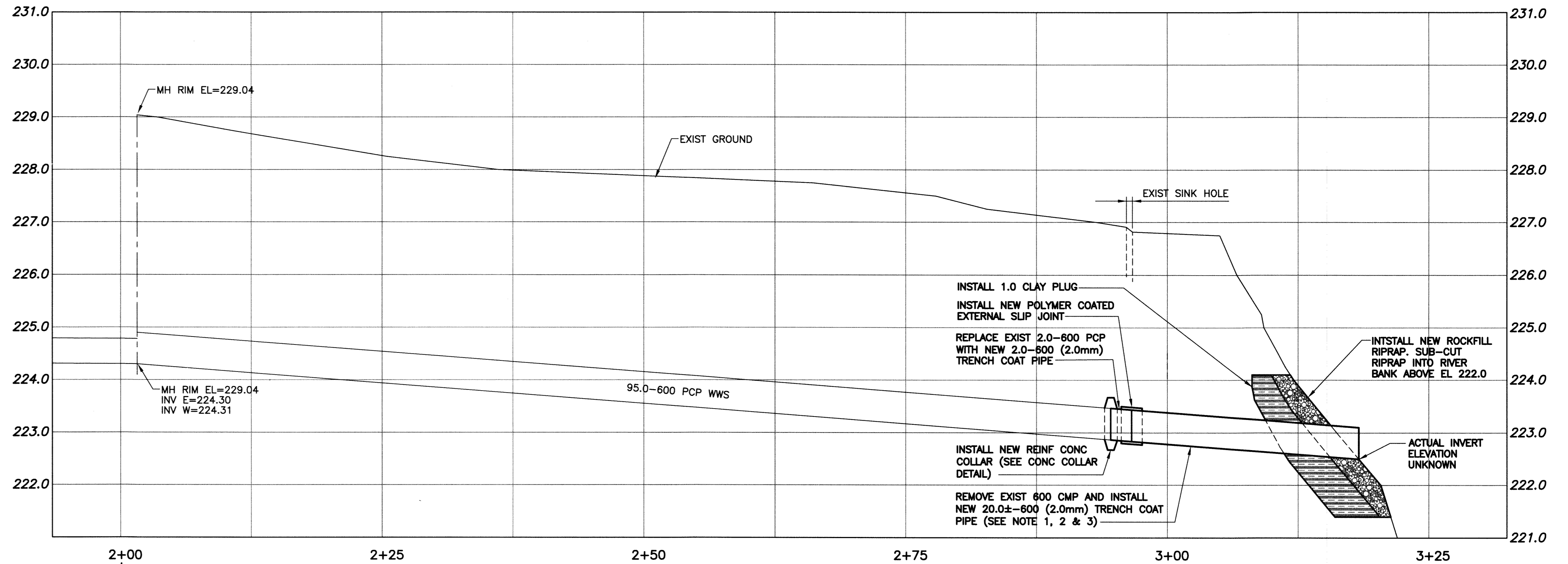


REINFORCED CONCRETE COLLAR DETAIL SCALE: 1:25



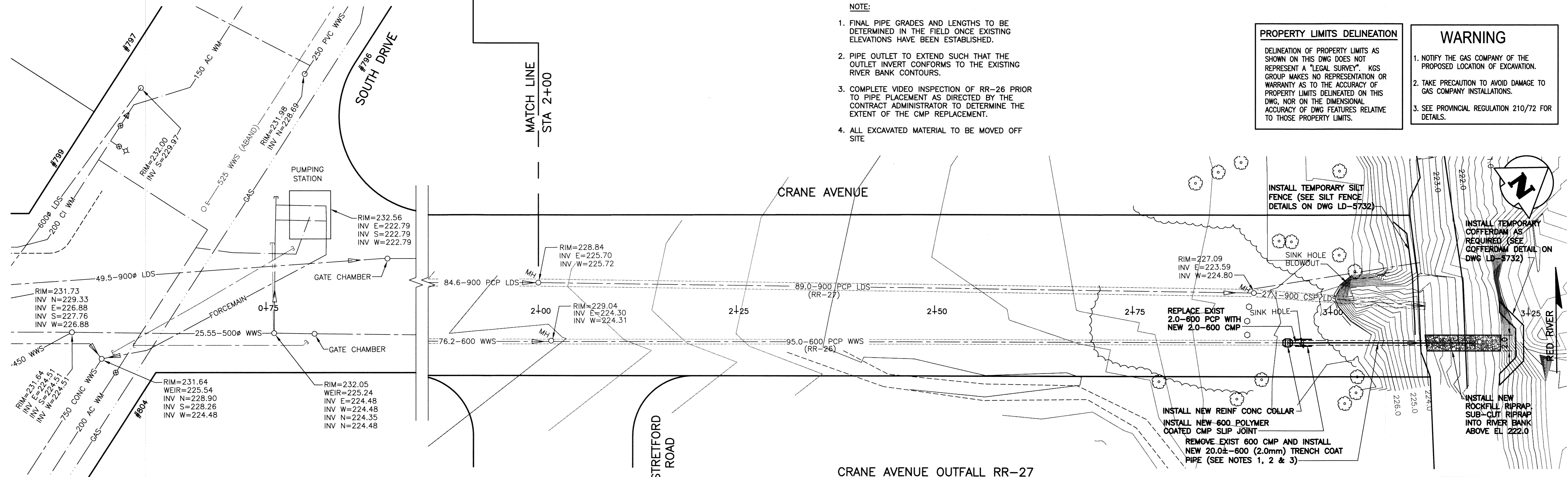
- NOTE:
- FINAL PIPE GRADES AND LENGTHS TO BE DETERMINED IN THE FIELD ONCE EXISTING ELEVATIONS HAVE BEEN ESTABLISHED.
 - PIPE OUTLET TO EXTEND SUCH THAT THE OUTLET INVERT CONFORMS TO THE EXISTING RIVER BANK CONTOURS.
 - COMPLETE VIDEO INSPECTION OF RR-26 PRIOR TO PIPE PLACEMENT AS DIRECTED BY THE CONTRACT ADMINISTRATOR TO DETERMINE THE EXTENT OF THE CMP REPLACEMENT.
 - ALL EXCAVATED MATERIAL TO BE MOVED OFF SITE

PROPERTY LIMITS DELINEATION

DELINEATION OF PROPERTY LIMITS AS SHOWN ON THIS DWG DOES NOT REPRESENT A "LEGAL SURVEY". KGS GROUP MAKES NO REPRESENTATION OR WARRANTY AS TO THE ACCURACY OF PROPERTY LIMITS DELINEATED ON THIS DWG, NOR ON THE DIMENSIONAL ACCURACY OF DWG FEATURES RELATIVE TO THOSE PROPERTY LIMITS.

WARNING

- NOTIFY THE GAS COMPANY OF THE PROPOSED LOCATION OF EXCAVATION.
- TAKE PRECAUTION TO AVOID DAMAGE TO GAS COMPANY INSTALLATIONS.
- SEE PROVINCIAL REGULATION 210/72 FOR DETAILS.



METRIC
WHOLE NUMBERS INDICATE MILLIMETRES
DECIMALIZED NUMBERS INDICATE METRES



300 LDS	LAND DRAINAGE SEWER	300 LDS						
250 WWS	WASTE WATER SEWER	250 WWS	+	TEST HOLE				
	GAS		-	GUY WIRE				
	HYDRO		••	LIGHT STANDARD				
	M.T.S.			BACK OF CURB				
150 WM	WATERMAIN	150 WM	+	CONCRETE				
	HYDRANT		+	ASPHALT				
	VALVE		+	SIDEWALK				
	MANHOLE		○	PROPERTY LINE				
	CATCH BASIN		+	SURVEY BAR				
	CURB INLET		▽	GEODETIC BENCHMARK				
	POLES		•	ELEVATION				
EXISTING	LEGEND-PLAN	PROPOSED		EXISTING	LEGEND-PLAN	PROPOSED		

LOCATION APPROVED UNDERGROUND STRUCTURES

SUPV. U/G STRUCTURES COMMITTEE DATE

NOTE:
LOCATION OF UNDERGROUND STRUCTURES AS SHOWN ARE BASED ON THE BEST INFORMATION AVAILABLE BUT NO GUARANTEE IS GIVEN THAT ALL EXISTING UTILITIES ARE SHOWN OR THAT THE GIVEN LOCATIONS ARE EXACT. CONFIRMATION OF EXISTENCE AND EXACT LOCATION OF ALL SERVICES MUST BE OBTAINED FROM THE INDIVIDUAL UTILITIES BEFORE PROCEEDING WITH CONSTRUCTION.

B.M. KGS BASE ELEV. -	DWGS BASED ON C.S.R.S. NAD 83 SYSTEM, UTM GRID
DESIGNED BY RBO	CHECKED BY RJH
DRAWN BY DMW	APPROVED BY
HOR. SCALE: 1:250	RELEASED FOR CONSTRUCTION:
VERTICAL: 1:50	DATE
ISSUED FOR TENDER 11/12/19	DATE 11/11/03
NO. REVISIONS	DATE

KGS GROUP CONSULTING ENGINEERS

ENGINEER'S SEAL
R.B. OFFMAN
Member 24701
Professional Engineer

CONSULTANT DRAWING NO. 11-0107-33_04

THE CITY OF WINNIPEG WATER AND WASTE DEPARTMENT

PROJECT TITLE: 2012 OUTFALL RENEWAL/REHABILITATION PROGRAM

SHEET 04 OF 07

COMPUTER FILE NAME: 11-0107-23_04

CITY DRAWING NUMBER: LD-5729

File Name: P:\Projects\2011\11-0107-33\Doc\Control\ToBeIssued\DWG\11-0107-33_LD-5729-Rev.0.dwg - Tab: LD-5729 Plotted By: Dderoché 11/12/19 [Mon 2:49pm] A17 PLOT SCALE: 1:25